

HOW **BORDERLINE GENIUS** UNLOCKS THE POWER OF YOUR CUSTOMS DATA

Turning CDS data into actionable insights – reducing costs, managing risk, and driving compliance



THE MISSED OPPORTUNITY

Most businesses don't know what's in their customs data – until it's too late.

Customs Declaration Service (CDS) data is the official record of every import and export declaration made by your business or its customs agents. Formerly known as MSS data, it's a crucial resource for customs compliance, audit readiness, and strategic trade planning.

But here's the problem:

CDS data is dense, technical, and difficult to interpret. Most businesses only request it when HMRC initiates a review – by which point, it's often too late to take corrective action or reclaim overpaid duty.

THE CLEVER SOLUTION: **BORDERLINE GENIUS**

Our in-house CDA (Customs data Analysis) tool, operated by CP's customs specialists, transforms raw CDS data into a clear, tailored report that helps you:

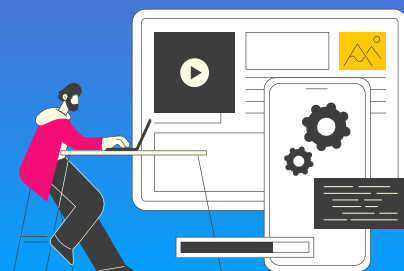
- Understand your UK trade footprint
- Reduce risk and improve compliance
- Identify opportunities for supply chain optimisation and duty reclaims
- Support SAO compliance and HMRC risk reviews
- Make informed, strategic decisions.

WHAT YOU GET

We deliver a clear insight-rich report that includes:

- Key trade summaries and trends
- Risk indicators and potential compliance gaps
- Duty reclaims opportunities
- Overview customs procedures and reliefs
- Origin and preference usage
- Customs agent performance and clearance costs
- Supply chain and commodity code insights.

With increased resource in recent times, HMRC has ramped up its customs audit activity and remote risk assessments – with a shaper focus on post-Brexit compliance and underpaid duty.



KEY QUESTIONS WE HELP ANSWER

Questions to ask internally - and of your customs data:



Do we have a clear understanding of our UK import/export activity?

What level of oversight do we have of our customs declarations and compliance?

What is our annual customs duty bill, and are we aware of the key risks (Classification, Valuation, Origin)

Have we maximised the use of UK Trade Agreements and preference claims to reduce our import duty liability?

Are we confident our customs agents are following our clearance instructions and making compliant declarations?

Are our declarations aligned with HMRC authorisation conditions?

Have we optimised our supply chains and used HMRC's Customs Special Procedures, and reliefs (e.g. Customs Warehousing, Inward Processing, Returned Goods Relief etc.)?

How much do we spend annually on customs agents for import/export clearances?

Are our goods classified correctly?

Are we managing import VAT and zero-rated exports correctly?

Have we valued our goods accurately in line with a compliant customs valuation method (think intercompany payments/Transfer Pricing and separate transactions costs e.g. licence fees, assists, royalties, commissions etc.)?

Can we demonstrate sufficient processes and oversight to HMRC – for SAO compliance or in the event of a customs audit?

BORDERLINE GENIUS. FLEXIBLE OPTIONS

We offer different levels of support to suit your needs:

Snapshot review:

Analyse up to 3 years of CDS data - the full duty reclaim window

Periodic reviews:

Quarterly or annual reporting to maintain control and compliance

Mock audit:

- Simulate an HMRC audit using your data:
- Familiarise your team with HMRC's audit process
 - Identify risks and rectify errors proactively
 - Take remedial action before HMRC intervenes

WHY CP?

We're not software vendors. We're customs experts.

Our team brings decades of experience from HMRC, Big 4, and industry. We combine deep technical knowledge with sector-specific insight - using our proprietary tool to uncover risks, identify cost savings, and support strategic decisions. It's not just data. It's clarity, compliance, and commercial value.

LET'S TALK

Ready to unlock your customs data and see what is hiding underneath?

Contact Allan or your indirect tax team contact to chat through Borderline Genius.

ALLAN BIRD
Head of Customs, International
Trade and Excise Tax - VAT
allan.bird@cooperparry.com

